

OUR APP!



- ORDER AHEAD
- GET DELIVERY
- EARN REWARDS
- FIND OUR LOCATIONS!



Welcome to Crave



CATERING

menu

#BEATTHECRAVING



WWW.IWANTCRAVE.COM

MEAT *trays*

BRISKET

PULLED CHICKEN

PULLED PORK

SIDE *trays*

- CORNBREAD
- MAC N CHEESE
- COLESLAW
- POTATO SALAD
- BEANS
- CHIPS
- PICKLES

DESSERT *platter*

CHOCOLATE CHIP *platter*

COOKIE TRAY

HOT DOG *bar*

100 DOGS PER TRAY,
BUNS ON SIDE. CHOOSE
TOPPINGS TRAYS BELOW

TOPPINGS

- | | |
|------------|---------------------------|
| ▪ KETCHUP | ▪ SAUERKRAUT |
| ▪ MUSTARD | ▪ SPICY PICKLE CHIPS |
| ▪ RELISH | ▪ DICED TOMATOES |
| ▪ JALAPEÑO | ▪ SAUCY ONIONS |
| ▪ ONIONS | ▪ SPORT PEPPERS |
| ▪ COLESLAW | ▪ SHREDDED CHEDDAR |
| ▪ CHILI | ▪ CRAFT BEER CHEESE |
| ▪ BACON | ▪ PIMENTO CHEESE |
| ▪ PICKLES | ▪ COOKED PEPPERS & ONIONS |

PLATTERS

SANDWICH *trays*

BRISKET SANDWICHES

PULLED CHICKEN SANDWICHES

PULLED PORK SANDWICHES

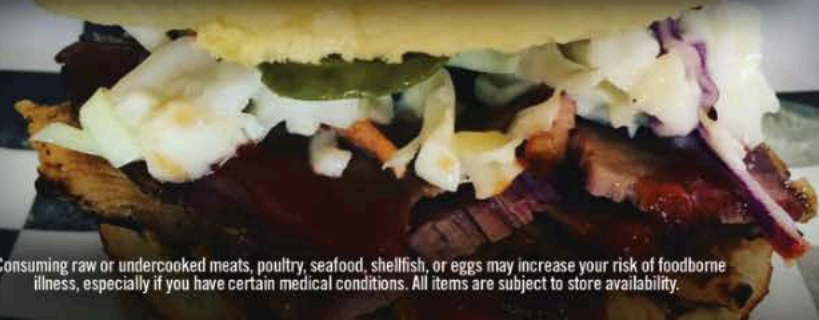
SLIDER *trays*

BRISKET SLIDER

PULLED CHICKEN SLIDER

PULLED PORK SLIDER

SANDWICHES & SLIDERS ARE SERVED EITHER ON A
BRIOCHE BUN OR BUNS ARE AVAILABLE ON THE SIDE.
COLESLAW & PICKLES ARE RECOMMENDED SIDES



* Consuming raw or undercooked meats, poultry, seafood, shellfish, or eggs may increase your risk of foodborne illness, especially if you have certain medical conditions. All items are subject to store availability.